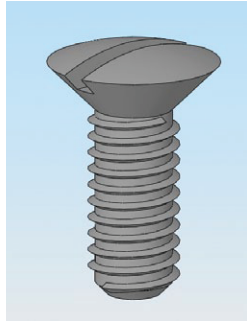
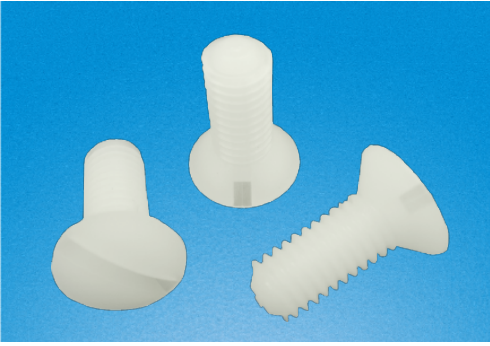


RCCN 日成NSOH型尼龙沉头半圆螺丝Nylon Screw Oval Head



材质：UL合格之NYLON66(本色)，防火等级94V-2，绝缘性佳，不易老化。

用途：PC板,机板及其它产品固定用。

特点：质量轻,绝缘,抗干扰,不生锈,耐酸碱,耐候性强。

说明：本品与NSCS型区别头部突出半圆型，参考3D图。

Material : UL approved NYLON66(natural) ,
Fireproof: 94V-2 , good insulation,
good aging resistant

日成NSOH型尼龙沉头半圆螺丝 Nylon Screw Oval Head

单位/Unit:mm

| 型号 Item No. | 螺牙 Thread | L | D | K | 包装 Packing |
|----------------|--------------|----|-----|------|---------------|
| NSOH-M305 | M3 | 5 | 5.5 | 1.65 | 1000pcs |
| NSOH-M306 | M3 | 6 | 5.5 | 1.65 | |
| NSOH-M308 | M3 | 8 | 5.5 | 1.65 | |
| NSOH-M310 | M3 | 10 | 5.5 | 1.65 | |
| NSOH-M312 | M3 | 12 | 5.5 | 1.65 | |
| NSOH-M316 | M3 | 16 | 5.5 | 1.65 | |
| NSOH-M320 | M3 | 20 | 5.5 | 1.65 | |
| NSOH-M325 | M3 | 25 | 5.5 | 1.65 | |
| NSOH-M406 | M4 | 6 | 8.4 | 2.7 | |
| NSOH-M408 | M4 | 8 | 8.4 | 2.7 | |
| NSOH-M410 | M4 | 10 | 8.4 | 2.7 | |
| NSOH-M412 | M4 | 12 | 8.4 | 2.7 | |
| NSOH-M415 | M4 | 15 | 8.4 | 2.7 | |
| NSOH-M420 | M4 | 20 | 8.4 | 2.7 | |
| NSOH-M425 | M4 | 25 | 8.4 | 2.7 | |
| NSOH-M430 | M4 | 30 | 8.4 | 2.7 | |

单位/Unit:mm

| 型号 Item No. | 螺牙 Thread | L | D | K | 包装 Packing |
|----------------|--------------|----|------|-----|---------------|
| NSOH-M510 | M5 | 10 | 9.3 | 2.7 | 1000pcs |
| NSOH-M512 | M5 | 12 | 9.3 | 2.7 | |
| NSOH-M515 | M5 | 15 | 9.3 | 2.7 | |
| NSOH-M516 | M5 | 16 | 9.3 | 2.7 | |
| NSOH-M518 | M5 | 18 | 9.3 | 2.7 | |
| NSOH-M520 | M5 | 20 | 9.3 | 2.7 | |
| NSOH-M525 | M5 | 25 | 9.3 | 2.7 | |
| NSOH-M530 | M5 | 30 | 9.3 | 2.7 | |
| NSOH-M608 | M6 | 8 | 11.3 | 3.3 | |
| NSOH-M610 | M6 | 10 | 11.3 | 3.3 | |
| NSOH-M612 | M6 | 12 | 11.3 | 3.3 | |
| NSOH-M615 | M6 | 15 | 11.3 | 3.3 | |
| NSOH-M620 | M6 | 20 | 11.3 | 3.3 | |
| NSOH-M622 | M6 | 22 | 11.3 | 3.3 | |
| NSOH-M625 | M6 | 25 | 11.3 | 3.3 | |
| NSOH-M630 | M6 | 30 | 11.3 | 3.3 | |
| NSOH-M640 | M6 | 40 | 11.3 | 3.3 | |
| NSOH-M650 | M6 | 50 | 11.3 | 3.3 | |
| NSOH-M660 | M6 | 60 | 11.3 | 3.3 | |

